

RAPID

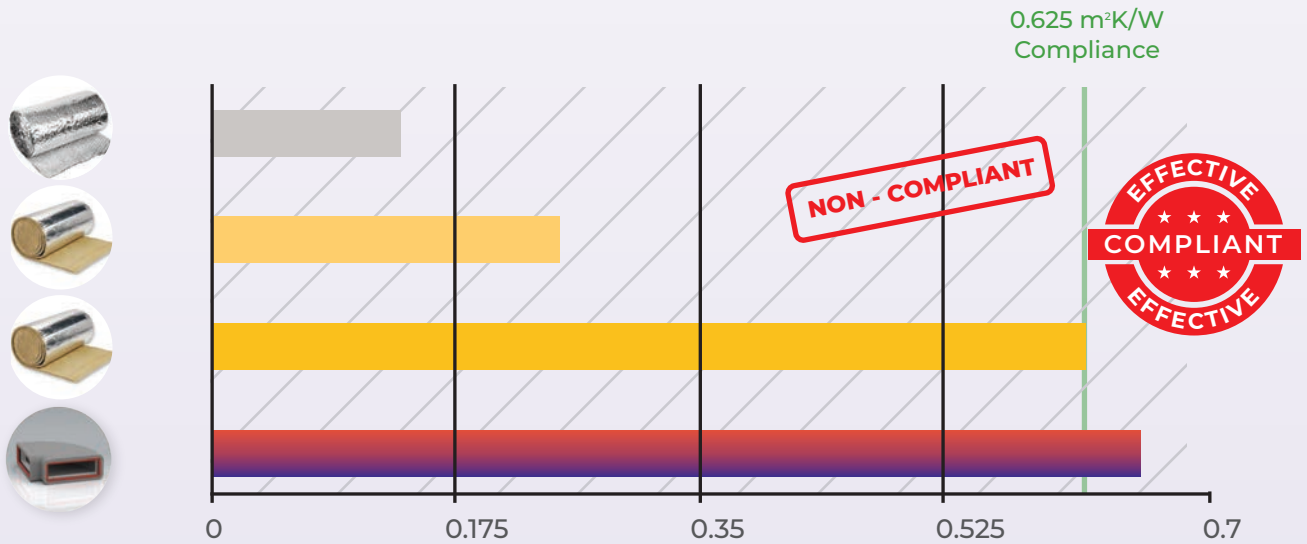
[[SELF-SEAL]] THERMAL

Click here to see
how easy it is to use



MAJOR BENEFITS OF RAPID SELF-SEAL THERMAL

- At Least 50% Less Labour
- No Tape, Sealant, Tek Screws Or Mineral Wool
- Only 1 Installer Required
- Exceeds Thermal Regulation Requirements
- Less Time On Site
- Less Mess



- Aluminium Coated Bubble Foil 4mm Thick (1 Layer) with Thermal Conductivity 0.03 W/mK
- Mineral Wool 10mm Thick with Thermal Conductivity 0.04 W/mK
- Mineral Wool 25mm Thick with Thermal Conductivity 0.04 W/mK
- Verplas Self-Seal Thermal with Thermal Conductivity 0.03 W/mK

RECTANGULAR RANGE

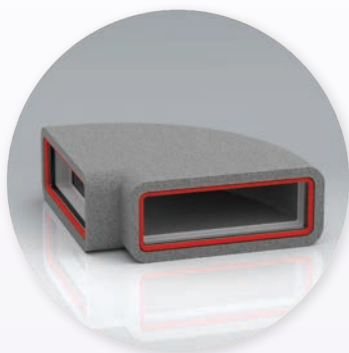
Rectangular 1m Length

Available in:
204 x 60
[SST-204-1M-IND](#)
220 x 90
[SST-220-1M-IND](#)

Rectangular 2m Length

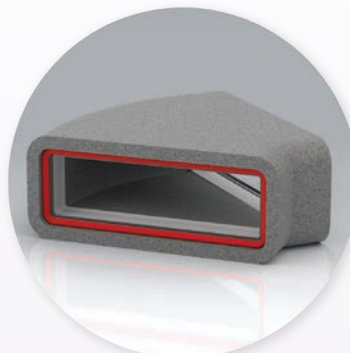
Available in:
204 x 60
[SST-204-2M-IND](#)
220 x 90
[SST-220-2M-IND](#)

RECTANGULAR RANGE



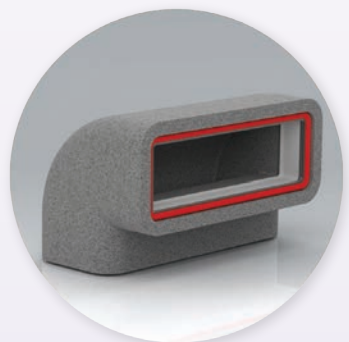
**Rectangular 90°
Horizontal Bend**

Available in:
204 x 60
[SST-204-90HB-IND](#)
220 x 90
[SST-220-90HB-IND](#)



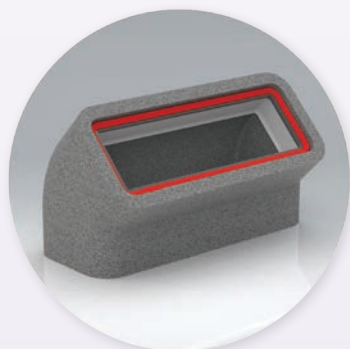
**Rectangular 45°
Horizontal Bend**

Available in:
204 x 60
[SST-204-45HB-IND](#)
220 x 90
[SST-220-45HB-IND](#)



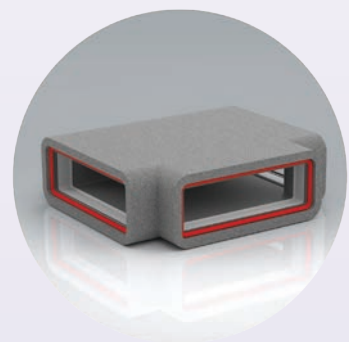
**Rectangular 90°
Vertical Bend**

Available in:
204 x 60
[SST-204-90VB-IND](#)
220 x 90
[SST-220-90VB-IND](#)



**Rectangular 45°
Vertical Bend**

Available in:
204 x 60
[SST-204-45VB-IND](#)
220 x 90
[SST-220-45VB-IND](#)



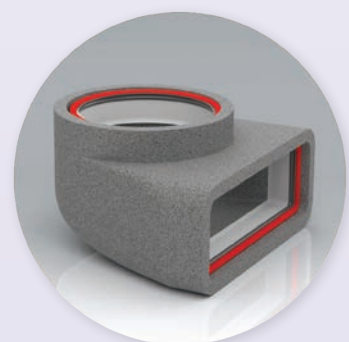
**Rectangular Equal
T-Piece**

Available in:
204 x 60
[SST-204-TP-IND](#)
220 x 90
[SST-220-TP-IND](#)



**Rectangular to
Round Adaptor**

Available in:
204 x 60
[SST-204-125ADAP-IND](#)
220 x 90
[SST-220-160ADAP-IND](#)



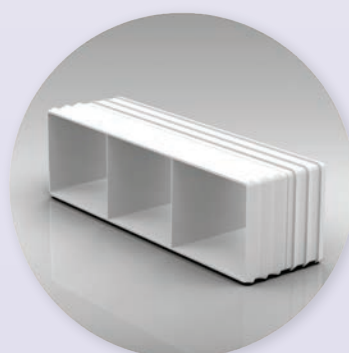
**Rectangular to 125mm
Round Plenum**

Available in:
204 x 60
[SST-204-PL-IND](#)
220 x 90
[SST-220-PL-IND](#)



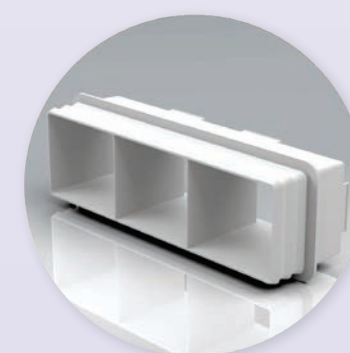
**Rectangular to 160mm
Round Plenum**

Available in:
220 x 90
[SST-220-PL160-IND](#)



**Rectangular
Duct to Duct Connector**

Available in:
204 x 60
[SST-204-DDCON](#)
220 x 90
[SST-220-DDCON](#)



**Rectangular
Duct to Fitting
Connector**

Available in:
204 x 60
[SST-204-DFCON](#)
220 x 90
[SST-220-DFCON](#)

ROUND RANGE



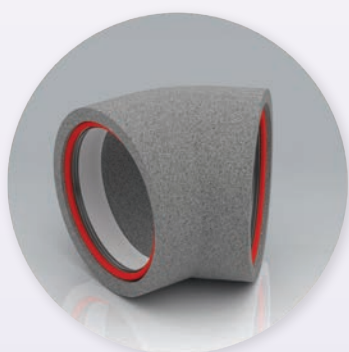
Round 1m Length

Available in:
125mm
[SST-125-1M-IND](#)
160mm
[SST-160-1M-IND](#)



Round 2m Length

Available in:
125mm
[SST-125-2M-IND](#)
160mm
[SST-160-2M-IND](#)



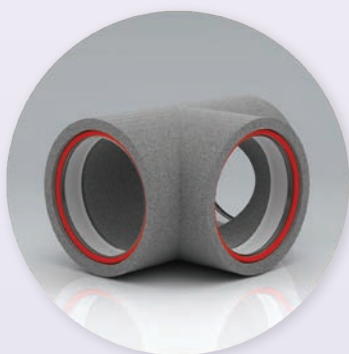
Round 45° Bend

Available in:
125mm
[SST-125-45B-IND](#)
160mm
[SST-160-45B-IND](#)



Round 90° Bend

Available in:
125mm
[SST-125-90B-IND](#)
160mm
[SST-160-90B-IND](#)



Round T-Piece

Available in:
125mm
[SST-125-TP-IND](#)
160mm
[SST-160-TP-IND](#)



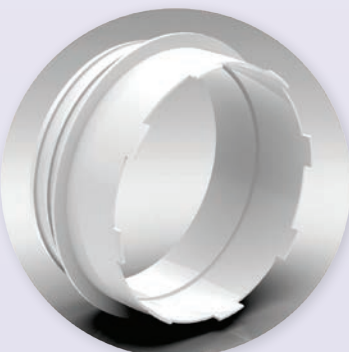
160mm – 150mm Adaptor

Available in:
160mm
[SST-160-ADAPTOR](#)



Round Duct to Duct Connector

Available in:
125mm
[SST-125-DDCON](#)
160mm
[SST-160-DDCON](#)



Round Duct to Fitting Connector

Available in:
125mm
[SST-125-DFCON](#)
160mm
[SST-160-DFCON](#)