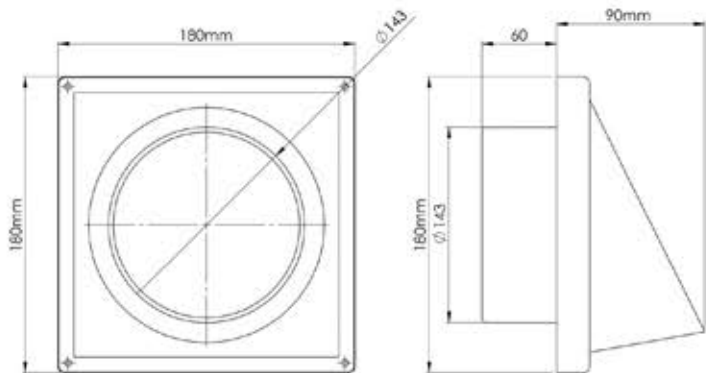


PRODUCT DATA SHEET

SS153

STAINLESS STEEL COWL OUTLET WITH NON-RETURN FLAP



SPECIFICATION DETAILS

The SS153 150mm diameter Stainless Steel Cowl Grille with Non-Return Flap Is manufactured from stainless steel and has minimum free area of 13,175mm²

The SS153 Is fully compliant with SAP Appendix Q Product Characteristics Database recommendations for duct sizes used with both extract and Mechanical Heat Recovery Systems.

SS153 Is manufactured in compliance with Domestic Plastic Ductwork Specification DW/154 and does meet UL94HB flammability standard.

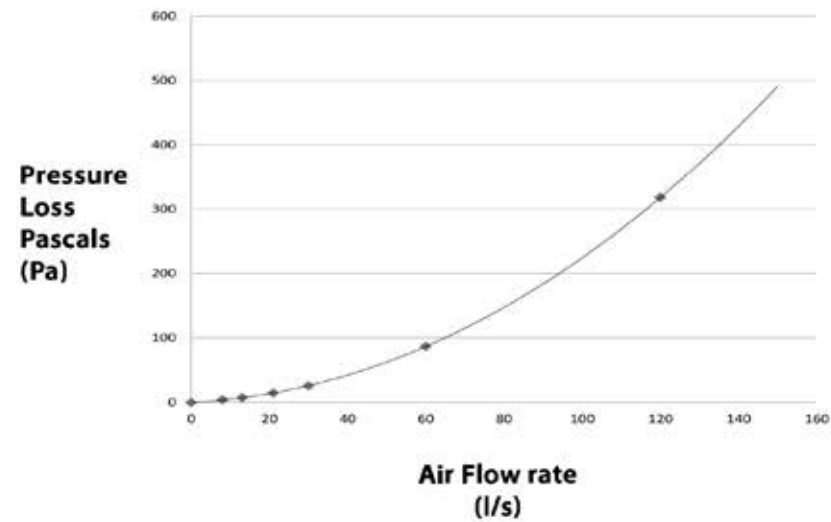
SS153 has been designed for use with Verplas System 150 Round.

Manufacturer:	Verplas Ltd
Part Number:	SS153
Size:	150mm Diameter
For use with:	Verplas System 150
Box quantity:	18
Individual Weight:	500g
Colour:	White

MAX/MIN OPERATING TEMPERATURES

+ 60°C to - 15°C

PERFORMANCE CURVE



AIRFLOW	RESISTANCE
8 l/s	4.28 pa
13 l/s	7.48 pa
21 l/s	14.70 pa
30 l/s	25.91 pa
60 l/s	86.92 pa
120 l/s	318.02 pa

Associated Ancillaries

