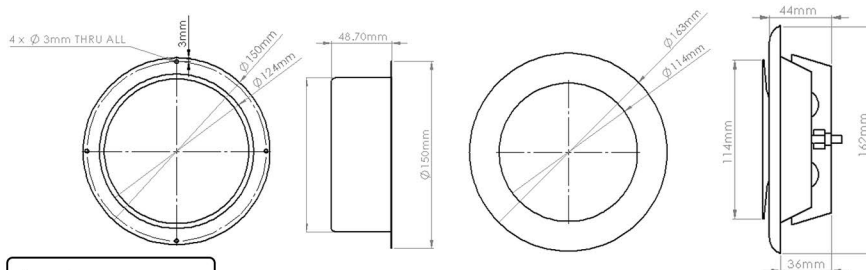
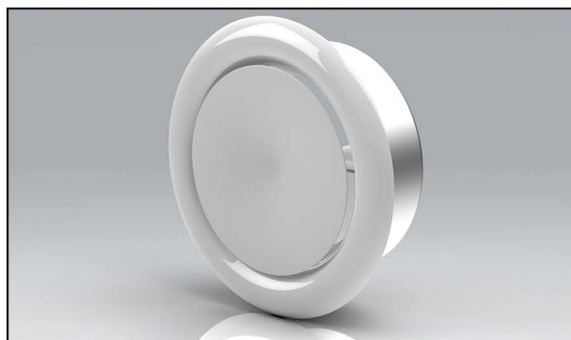


PRODUCT DATA SHEET

MW125

WHITE METAL CEILING AIR SUPPLY VALVE



☐ RAL9016

MANUFACTURER:	VERPLAS LTD
PART NUMBER:	MW125
SIZE:	125mmØ
FOR USE WITH:	VERPLAS SYSTEM 125
BOX QUANTITY:	7
INDIVIDUAL WEIGHT:	343g
COLOUR	White
MIN OPERATING TEMP	-20°C
MAX OPERATING TEMP	+100°C

SPECIFICATION DETAILS

The MW125 125mm diameter Round White Metal Ceiling Air Supply Valve is manufactured from White Epoxy Powder Coated Steel and has minimum free area of 2,907mm² with Control Disc 10mm open. It has a male spigot for connection inside of the System 125mm duct.

The MW125 supply air valve is fully adjustable and has a locking nut to fix the position of the control disc upon commissioning.

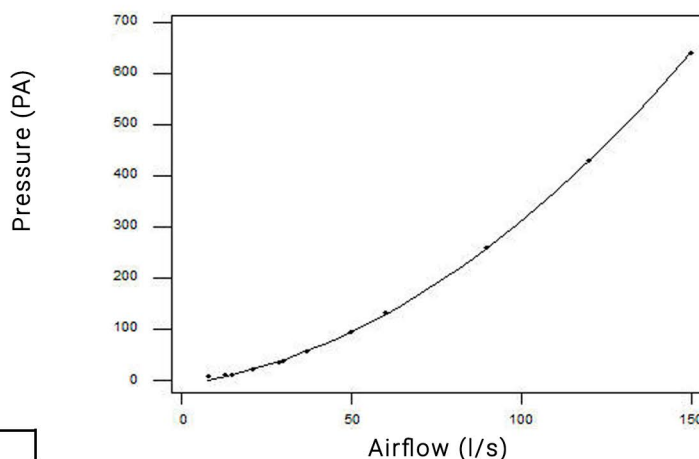
The MW125 is supplied complete with a fixing body with pre-drilled holes for installation.

MW125 has been designed for use with Verplas System 125 Round.

AIRFLOW RESISTANCE

8 l/s	6.00 pa
13 l/s	10.00 pa
21 l/s	15.00 pa
30 l/s	24.80 pa
60 l/s	96.20 pa
120 l/s	386.90pa

PERFORMANCE CURVE



Associated Ancillaries

VKC2692
125mmØ 2m
Round Pipe

VKC6118
125mmØ Round
Wall Plate

VKC350
125mmØ 90°
Round Elbow Bend

