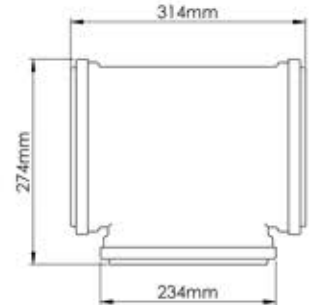
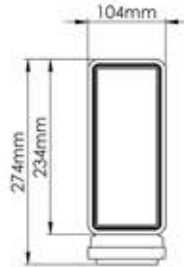
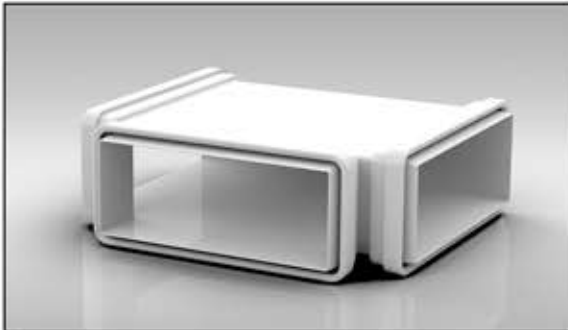


PRODUCT DATA SHEET

VSSC5730

Rapid Self-Seal 220x90mm T-Piece



MANUFACTURER:	VERPLAS LTD
PART NUMBER:	VSSC5730
SIZE:	220x90mm
FOR USE WITH:	VERPLAS SYSTEM 220
BOX QUANTITY:	8
INDIVIDUAL WEIGHT:	678g
COLOUR	White
MIN OPERATING TEMP	-15°C
MAX OPERATING TEMP	+60°C

SPECIFICATION DETAILS

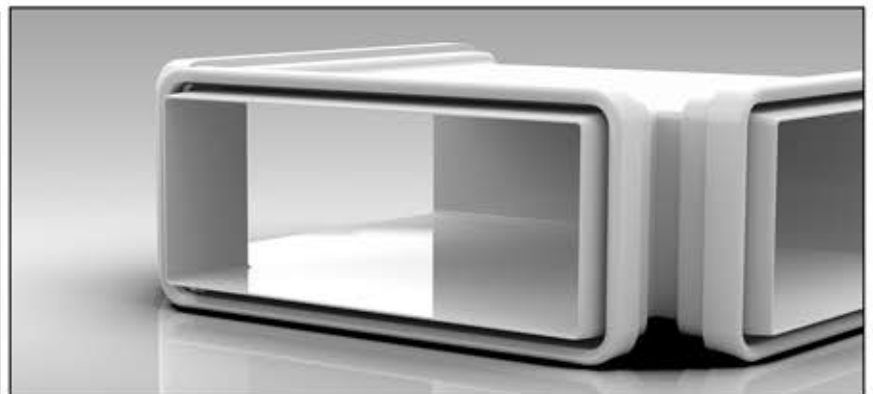
The VSSC5730 220x90mm Rapid Self-Seal T-Piece is manufactured from (white) high impact polystyrene and has a free area of 16,790mm². The Rapid Self-Seal T-Piece incorporates a gasket to reduce air leakage to an absolute minimum between System 220 ducting.

The VSSC5730 is fully compliant with SAP Appendix Q Product Characteristics Database recommendations for duct sizes used with both extract and Mechanical Heat Recovery Systems.

The VSSC5730 is manufactured in compliance with Domestic Plastic Ductwork Specification DW/154 and does meet UL94HB flammability standard.

The VSSC5730 is designed for use with the Verplas System 220.

AIRFLOW	RESISTANCE
8 l/s	NA pa
13 l/s	NA pa
21 l/s	NA pa
30 l/s	NA pa
60 l/s	NA pa
120 l/s	NA pa



Associated Ancillaries

- VSSC5705 220x90mm Rapid Self-Seal 90° Horizontal Bend
- VSSC220DD 220x90mm Rapid Self-Seal Duct to Duct Connector
- VKC5729 220x90mm 2m Flat Channel



Scan Here
to find out
how quick
it is to install

