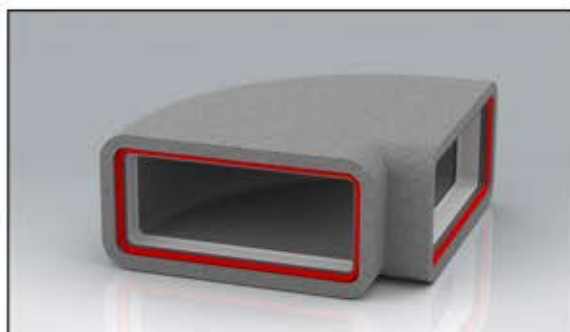


PRODUCT DATA SHEET

SST-220-90HB-IND

Rapid Self-Seal Thermal 220x90mm 90° Horizontal Bend



MANUFACTURER:	VERPLAS LTD
PART NUMBER:	SST-220-90HB-IND
SIZE:	220x90mm
FOR USE WITH:	VERPLAS THERMAL 220
BOX QUANTITY:	6
INDIVIDUAL WEIGHT:	250g
COLOUR	Grey
MIN OPERATING TEMP	-15°C
MAX OPERATING TEMP	+60°C
THERMAL RESISTANCE	0.666 m ² K/W
THERMAL CONDUCTIVITY	0.03 W/mK

SPECIFICATION DETAILS

The Verplas Self-Seal Thermal SST-220-90HB-IND insulated fitting is manufactured from graphite impregnated expanded polystyrene (EPS) with a minimum density of 25kg/m³ and a free area of 19,752 mm². The SST-220-90HB-IND is supplied with self-seal female couplings that allow the ducting fitted with a Duct to Fitting Connector to be plugged into the fitting apertures with a push, click and lock mechanism.

The Self-Seal female couplings are manufactured from prime High Impact Polystyrene and a Thermoplastic Elastomer Dynamic Sealing Gasket.

The EPS material is fully tested to meet the thermal conductivity requirements of BASF-EN13163 to assist with the prevention of condensation and is flame retardant to DIN 4102-B1.

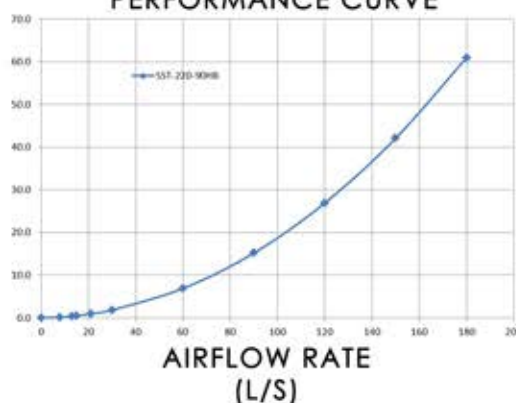
The patented push, click and lock mechanism provides a low leakage solution which exceeds the requirements set out in DW/143 Class A leakage test and DW/154 ductwork standards.

The Self-Seal Thermal is compliant with the requirements outlined in the Energy performance characteristics database for use in SAP with MVHR and MEV supply and extract ventilation systems.

AIRFLOW	RESISTANCE
8 l/s	0.20 pa
13 l/s	0.40 pa
21 l/s	1.00 pa
30 l/s	1.90 pa
60 l/s	6.90 pa
120 l/s	26.90 pa

PERFORMANCE CURVE

Pressure Loss
Pascals
(Pa)



Associated Ancillaries

SST-220-2M-IND 220x90mm Rapid Self-Seal Thermal 2m Flat Channel

SST-220-45VB-IND 220x90mm Rapid Thermal Self-Seal 45° Vertical Bend

SST-220-45HB-IND 220x90mm Rapid Self-Seal 45° Horizontal Thermal Bend



Scan Here
to find out
how quick
it is to install

