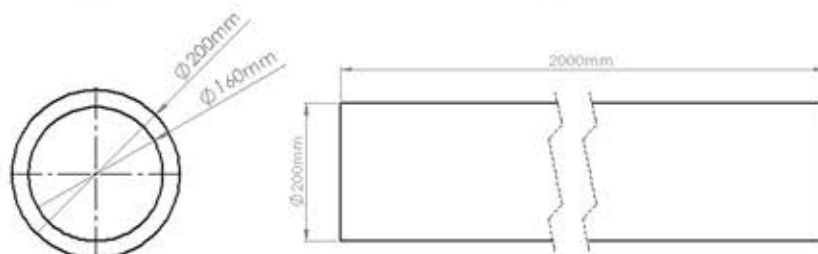
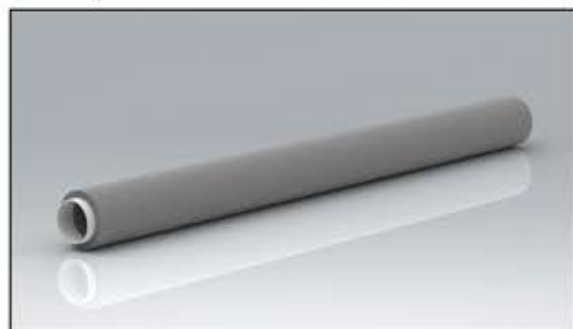


# PRODUCT DATA SHEET

## SST-160-2M-IND

Rapid Self-Seal Thermal 160mmØ 2m Length with Duct to Duct Fitting



MANUFACTURER:	VERPLAS LTD
PART NUMBER:	SST-160-2M-IND
SIZE:	160mmØ
FOR USE WITH:	VERPLAS THERMAL 160
BOX QUANTITY:	6
INDIVIDUAL WEIGHT:	844g
COLOUR	Grey
MIN OPERATING TEMP	-15°C
MAX OPERATING TEMP	+60°C
THERMAL RESISTANCE	0.666 m²K/W
THERMAL CONDUCTIVITY	0.03 W/mK

### SPECIFICATION DETAILS

The Verplas Self-Seal Thermal SST-160-2M-IND 2m length of insulated duct is manufactured from graphite impregnated expanded polystyrene (EPS) with a minimum density of 25kg/m³ and provides a free area of 20,108 mm². The SST-160-2M-IND is supplied with a single Duct to Duct Connector to fit into the next straight length of duct. The open end of the duct allows a push-fit over a 160mm Fan Spigot or a 150mm Fan Spigot fitted with an SST-160-ADAPTER, or it can be cut to length to insert a Duct to Fitting Connector to push, click and lock into the female coupling housed in every Fitting. The Duct to Duct and Duct to Fitting Connectors are manufactured from prime quality High Impact Polystyrene.

The EPS material is fully tested to meet the thermal conductivity requirements of BASF-EN13163 to assist with the prevention of condensation and is flame retardant to DIN 4102-B1.

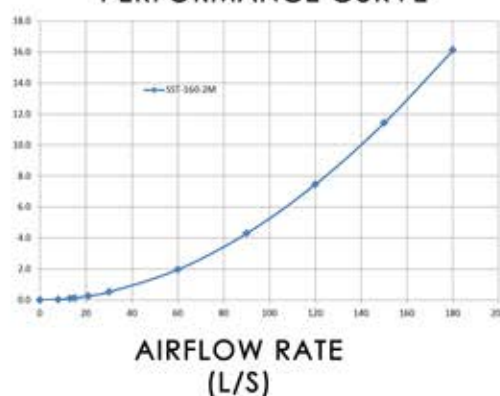
The patented push, click and lock mechanism provides a low leakage solution which exceeds the requirements set out in DW/143 Class A leakage test and DW/154 ductwork standards.

The Self-Seal Thermal is compliant with the requirements outlined in the Energy performance characteristics database for use in SAP with MVHR and MEV supply and extract ventilation systems.

### AIRFLOW RESISTANCE

8 l/s	0.00 pa
13 l/s	0.10 pa
21 l/s	0.30 pa
30 l/s	0.50 pa
60 l/s	2.00 pa
120 l/s	7.50 pa

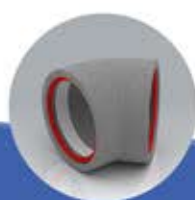
### PERFORMANCE CURVE



Pressure  
Loss  
Pascals  
(Pa)

### Associated Ancillaries

- SST-160-45B-IND  
160mmØ 45° Round Rapid  
Thermal Self-Seal Bend
- SST-160-1M-IND  
160mmØ Rapid  
Thermal Self-Seal 1m Pipe
- SST-160-90B-IND  
160mmØ 90° Rapid  
Self-Seal Thermal Bend



Scan Here  
to find out  
how quick  
it is to install

