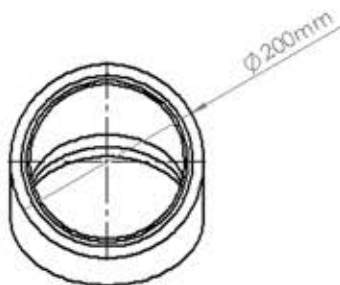
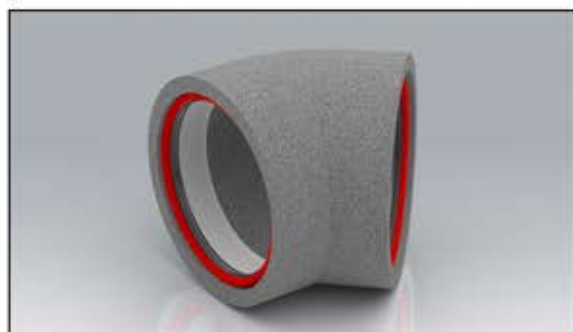


PRODUCT DATA SHEET

SST-160-45B-IND

Rapid Self-Seal Thermal 160mmØ 45° Round Bend



| | |
|----------------------|--------------------------|
| MANUFACTURER: | VERPLAS LTD |
| PART NUMBER: | SST-160-45B-IND |
| SIZE: | 160mmØ |
| FOR USE WITH: | VERPLAS THERMAL 160 |
| BOX QUANTITY: | 6 |
| INDIVIDUAL WEIGHT: | 180g |
| COLOUR | Grey |
| MIN OPERATING TEMP | -15°C |
| MAX OPERATING TEMP | +60°C |
| THERMAL RESISTANCE | 0.666 m ² K/W |
| THERMAL CONDUCTIVITY | 0.03 W/mK |

SPECIFICATION DETAILS

The Verplas Self-Seal Thermal SST-160-45B-IND insulated fitting is manufactured from graphite impregnated expanded polystyrene (EPS) with a minimum density of 25kg/m³ and provides a free area of 20,108 mm². The SST-160-45B-IND is supplied with self-seal female couplings that allow the ducting fitted with a Duct to Fitting Connector to be plugged into the fitting apertures with a push, click and lock mechanism.

The Self-Seal female couplings are manufactured from prime High Impact Polystyrene and a Thermoplastic Elastomer Dynamic Sealing Gasket.

The EPS material is fully tested to meet the thermal conductivity requirements of BASF-EN13163 to assist with the prevention of condensation and is flame retardant to DIN 4102-B1.

The patented push, click and lock mechanism provides a low leakage solution which exceeds the requirements set out in DW/143 Class A leakage test and DW/154 ductwork standards.

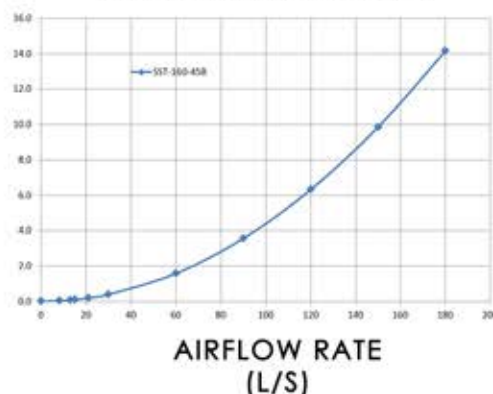
The Self-Seal Thermal is compliant with the requirements outlined in the Energy performance characteristics database for use in SAP with MVHR and MEV supply and extract ventilation systems.

AIRFLOW RESISTANCE

| | |
|---------|---------|
| 8 l/s | 0.00 pa |
| 13 l/s | 0.10 pa |
| 21 l/s | 0.20 pa |
| 30 l/s | 0.40 pa |
| 60 l/s | 1.60 pa |
| 120 l/s | 6.30 pa |

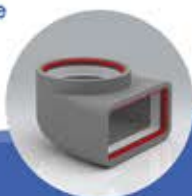
PERFORMANCE CURVE

Pressure
Loss
Pascals
(Pa)



Associated Ancillaries

- SST-160-TP-IND
160mmØ Round Rapid Thermal Self-Seal T-Piece
- SST-160-1M-IND
160mmØ Rapid Thermal Self-Seal 1m Pipe
- SST-220-PL160-IND
220x90mm to 160mmØ Rapid Self-Seal Thermal Plenum



Scan Here
to find out
how quick
it is to install

