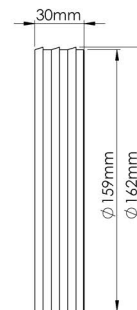
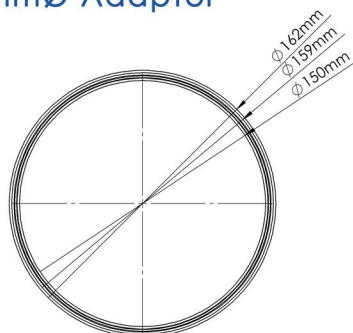


PRODUCT DATA SHEET

SST-160-150-ADAPTOR

Rapid Self-Seal Thermal 160mmØ to 150mmØ Adaptor



MANUFACTURER: VERPLAS LTD

PART NUMBER: SST-160-150-ADAPTOR

SIZE: 160mmØ

FOR USE WITH: VERPLAS THERMAL 160

BOX QUANTITY: 1

INDIVIDUAL WEIGHT: 42g

COLOUR: White

MIN OPERATING TEMP: -15°C

MAX OPERATING TEMP: +60°C

THERMAL RESISTANCE: N/A

THERMAL CONDUCTIVITY: N/A

SPECIFICATION DETAILS

The SST-160-150-ADAPTOR can be used to connect the SST-160 Thermal Duct onto a 150mm Fan Spigot or with the use of a Straight Connector VKC365, can connect System 160 Thermal Duct to conventional System 150 Round Plastic Ducting.

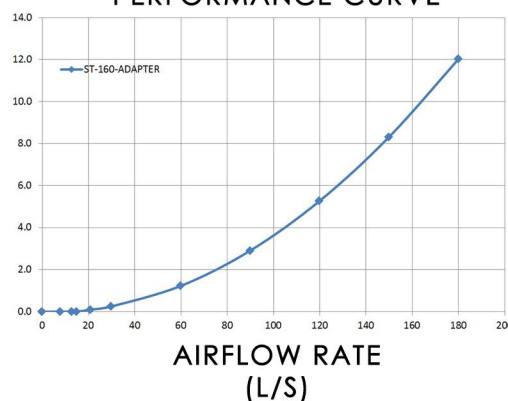
The SST-160-150-ADAPTOR is manufactured from prime High Impact Polystyrene and has a minimum free area of 17,577mm².

AIRFLOW RESISTANCE

8 l/s	0.00 pa
13 l/s	0.00 pa
21 l/s	0.10 pa
30 l/s	0.30 pa
60 l/s	1.20 pa
120 l/s	5.30 pa

PERFORMANCE CURVE

Pressure
Loss
Pascals
(Pa)

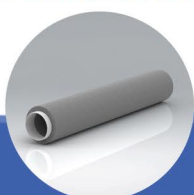
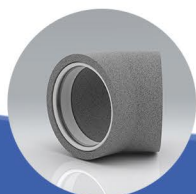


Associated Ancillaries

SST-160-45B-IND
160mmØ 45° Round Rapid
Thermal Self-Seal Bend

SST-160-1M-IND
160mmØ Rapid
Thermal Self-Seal 1m Pipe

SST-160-90B-IND
160mmØ Rapid Self-Seal
Thermal T-Piece



Scan Here
to find out
how quick
it is to install

